

HEAT RECOVERY VENTILATOR

Model HRV 12 LC

890 to 1170 cfm (0.4 in. w.g.)



VB0062

FOR LIGHT COMMERCIAL APPLICATIONS

High CFM ventilation for small business owners concerned about indoor air quality (excess moisture, smoke, odors and cleanliness). Suitable for installation above a suspended ceiling, mechanical room or suspended from a ceiling, this model delivers year-round comfort and sensible heat recovery with virtually no cross leakage. On this unit, the heat exchange efficiency can reach up to 60%.

- Best efficiency in its category
- The most compact unit on the market
- Only 24.5" (62.2 cm) high for false ceiling installation
- Defrost system
- Two-speed control
- Low voltage remote switch

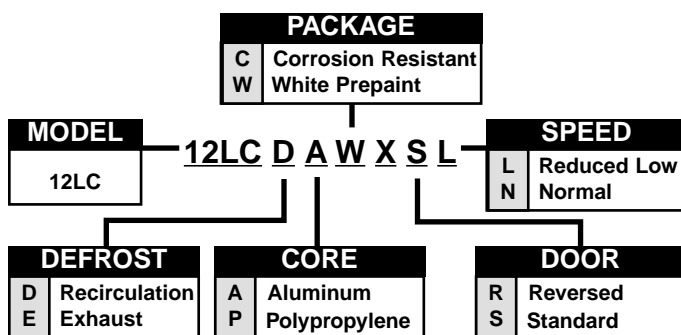
REPAIRS AND MAINTENANCE

All parts of the 12 LC such as the large access door and the entire motor sub-assembly can be removed for ease of maintenance. Furthermore, the electronic circuit board reduces electro-mechanical parts, minimizing repair time to a minimum.

WARRANTY

The 12 LC unit is fully protected by a 2-year warranty on parts, the best in the industry, and the heat recovery cores are covered by a 15-year warranty.

ORDERING EXAMPLE



Available at:

Controls

- Built-in electronic circuit board ready to receive one of the following main controls:

| | | | |
|--------------|--------|---------------|--------|
| vänEE | | Venmar | |
| -Basic | #40210 | -VENTA | #40310 |
| -Electro | #40220 | -SUPRA | #40320 |
- One or more of the following optional controls can be added:

| | | |
|--------------------------------|---------------------------|-----------------|
| - Humidity Control | #200694 (vänEE) | #11297 (Venmar) |
| - 20-min. lighted push button | #1806110 (vänEE) | #12030 (Venmar) |
| - 60-min. mechanical timer | #00910 (vänEE and Venmar) | |
| - Wireless 20-min. push button | #03366 (Venmar) | |

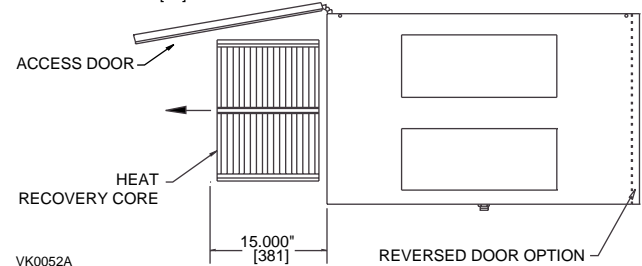
Options

- Aluminum heat recovery core
- Reversed access door
- Medium efficiency air supply filters
- Recirculation defrost module
- Reduced low speed
- Flow measuring stations

Heat Recovery Cores

Dimensions: 12" x 12" x 13.125" (30.5 cm x 30.5 cm x 33.33 cm)
 Exchange surface: 200 ft² (18.6 m²)
 Weight: 9.5 lbs (4.3 kg)
 Type: Plate to plate core
 Material: Polypropylene (3) or Aluminum (3)
 Warranty: 15 years

A MINIMUM OF 15.000" [381] CLEARANCE FROM ANY OBSTRUCTION IS REQUIRED FOR REMOVAL OF HEAT RECOVERY CORES, FANS, ETC. THE ACCESS DOOR CAN BE REMOVED FROM CABINET WITH ONLY 2.000" [51] OF CLEARANCE.

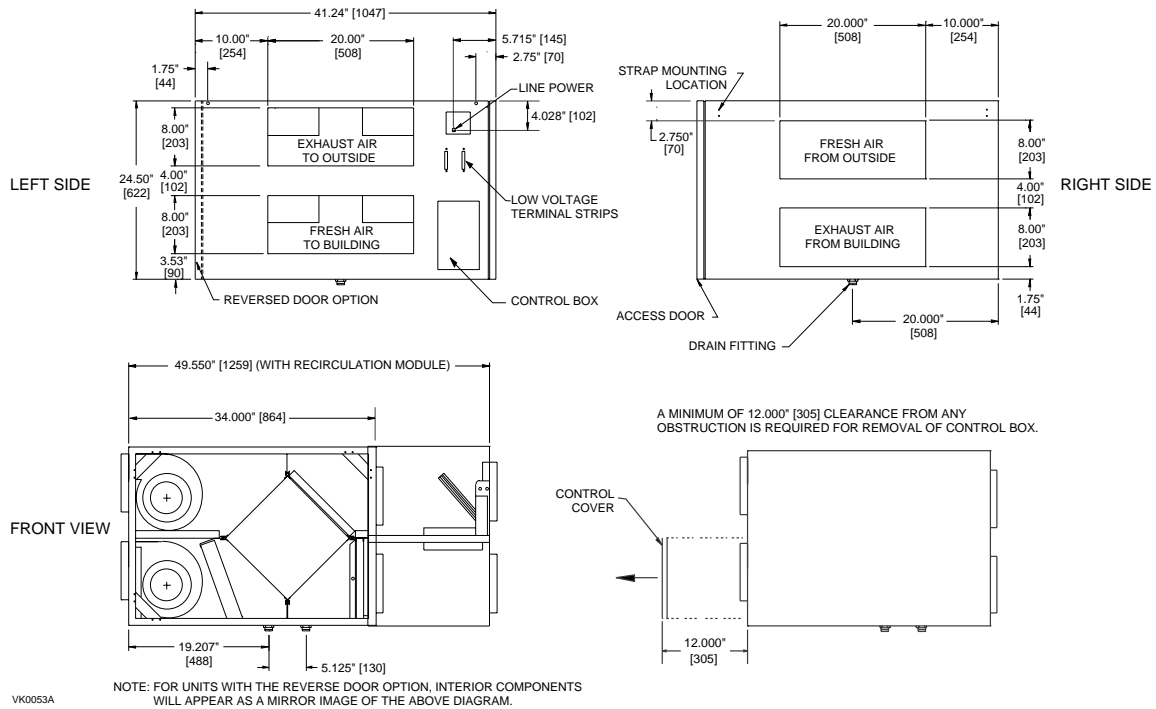


VK0052A

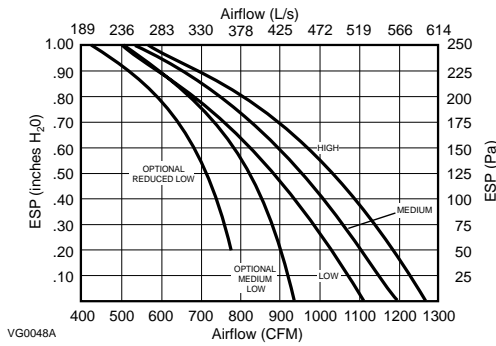
Requirements and Standards

- Complies with the CSA C22.2 # 113 Standard applicable to ventilators.
- Complies with the CSA F444 requirements regulating the installation of Heat Recovery Ventilators.
- Complies with UL Standard 1812 - ducted Heat Recovery Ventilators.

Dimensions and Service Clearances: HRV 12 LC

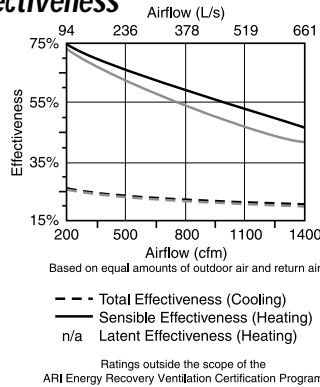


Performances



NOTE:
Units are factory set on low speed as minimum setting.
Use of MEF filters will add an additional system pressure of: 0.18 in. wg @ 1200 cfm with clean filters.

Effectiveness



Model Number: PHE500-13.1H-12S-0.11

Model Number: AHE500-13.1H-12S-0.14T

Type: Plate (Plate) Nominal Airflow: 300 (300) scfm
Pressure Drop: 0.51 (0.21) inches

Leakage Ratings

| | Pressure Differential | EATR | OACF | Purge Angle or Setting |
|---------|-----------------------|---------|-------------|------------------------|
| Test 1: | -5.00 (-3.00) inches | 0% (0%) | 1.00 (1.00) | N/A (N/A) |
| Test 2: | 0.00 (0.00) inches | 0% (0%) | 1.00 (1.00) | N/A (N/A) |
| Test 3: | 5.00 (3.00) inches | 0% (0%) | 1.00 (1.00) | N/A (N/A) |

Thermal Effectiveness Ratings at 0" Pressure Differential

| | Sensible | Latent | Total |
|---------------------------------|--------------|------------|-----------|
| 100% Airflow Heating Condition: | 55% (52%) | 0% (0%) | 36% (34%) |
| 75% Airflow Heating Condition: | 61% (58%) | 0% (0%) | 40% (38%) |
| 100% Airflow Cooling Condition: | 47% (46%) | 0% (0%) | 18% (18%) |
| 75% Airflow Cooling Condition: | 53% (51%) | 0% (0%) | 20% (20%) |
| | Net Sensible | Net Latent | Net Total |
| 100% Airflow Heating Condition: | 55% (52%) | 0% (0%) | 36% (34%) |
| 75% Airflow Heating Condition: | 61% (58%) | 0% (0%) | 40% (38%) |
| 100% Airflow Cooling Condition: | 47% (46%) | 0% (0%) | 18% (18%) |
| 75% Airflow Cooling Condition: | 53% (51%) | 0% (0%) | 20% (20%) |



Energy recovery component certified in accordance with ARI Standard 1060-2000. Actual performance in packaged equipment may vary.

Specifications and Ratings

- Model: HRV 12 LC
- Total Assembled Weight:
 - With polypropylene cores: 186 lbs (84 kg)
 - With aluminum cores: 208 lbs (94 kg)
- All duct connections: 20" x 8" (508 mm x 203 mm)
- Drains: 3/4" (19 mm) threaded fittings
- Filters: 6 reticulated washable foam filters (20 ppi) and 3 optional disposable 30% medium efficiency filters
- Cabinet: 20 ga. pre-painted steel
- Mounting: Reinforced rubber straps

- Insulation: 1" (2.54 cm) foil faced and 1" (2.54 cm) acoustic fiberglass wool
- Supply & Exhaust Blower Motors:
 - motor type: PSC motors with sealed sleeved bearings, 3 speeds (2 available to customer)
 - R.P.M.: 1625
 - H.P.: 1/3
 - fan type: direct drive centrifugal blower 7 1/8" x 6" (18.1 x 15.25 cm)
 - housing: galvanized steel

- Fan Speed Control: -Low, medium & high speed
 - Two speeds available to user
 - Low (or optional reduced low) or medium (or optional reduced medium) speed is selected at the time of installation
- Unit Electrical Characteristics:
 - Voltage: 115 volts
 - Power: 1275 watts
 - Current: 11.7 amperes

NOTE: All specifications are subjected to change without notice.

| | | | |
|---------------|----------|----------|-------------|
| Submitted by: | | Date: | Project: |
| Qty: | Model #: | Remarks: | Location: |
| | | | Architect: |
| | | | Engineer: |
| | | | Contractor: |

